

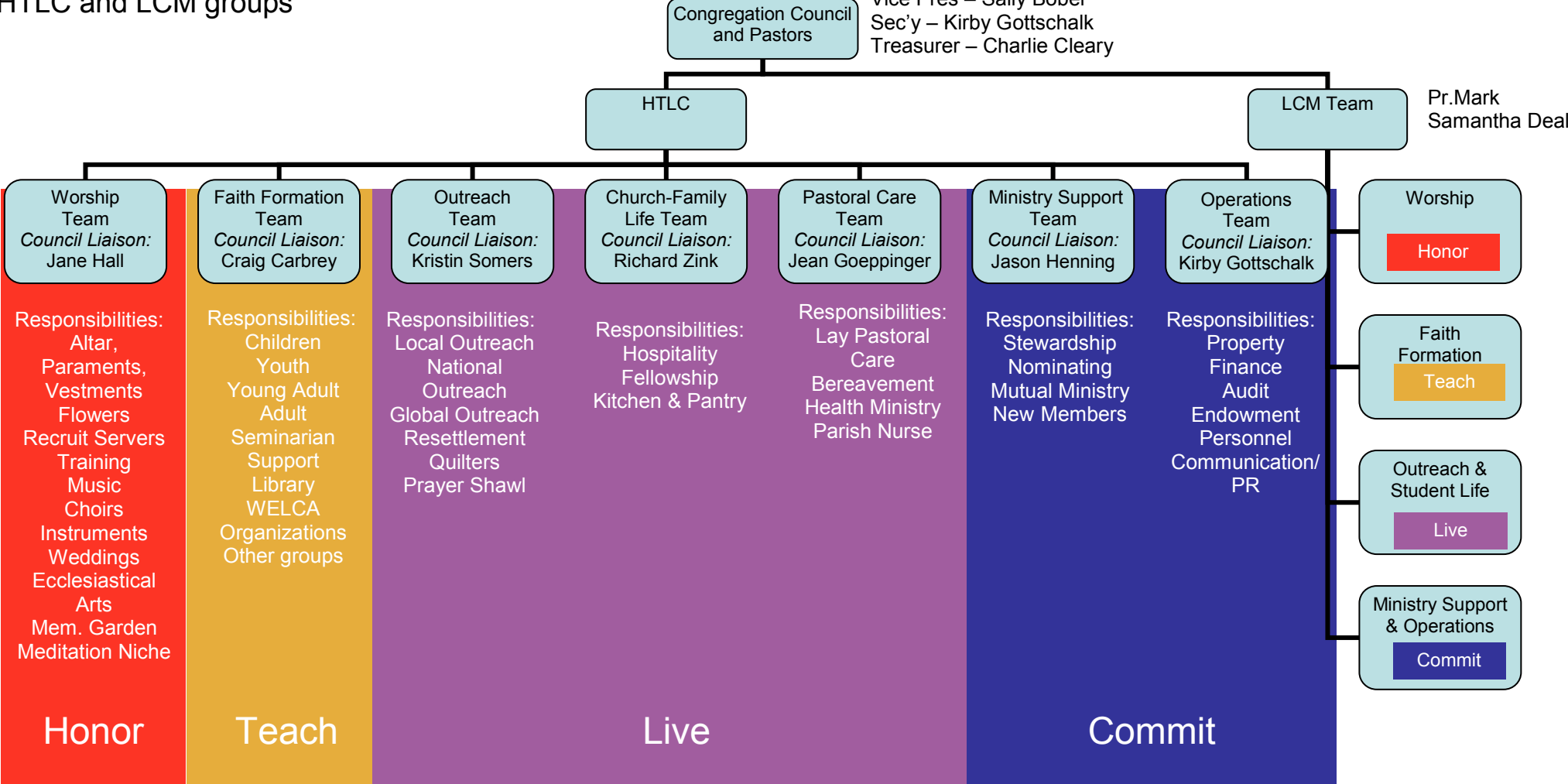
# Ministry Team Structure

HTLC & LCM

**Goals:**

- Involve more people in ministry
- Involve more people in decision making
- Strengthen connections between HTLC and LCM groups

President – Faith Ashton  
 Vice Pres – Sally Bober  
 Sec'y – Kirby Gottschalk  
 Treasurer – Charlie Cleary



Team Chairs

Kathy Dennis      Paige Coulter      Jane Hall      Richard Zink      Jason Henning      Kelly Wage

Staff Consultants

Valerie Hughes      Adam Buff      Ruth Efird      Heidi Rueckel